

AKSELA

AKSELA

FOUNDATION EQUIPMENT

Aksela is committed to providing our customer with the highest level of service and support. Contact us today to learn more about our Sales and Rental options and find out how we can help you tackle your next drilling project with confidence.

Parts and Service

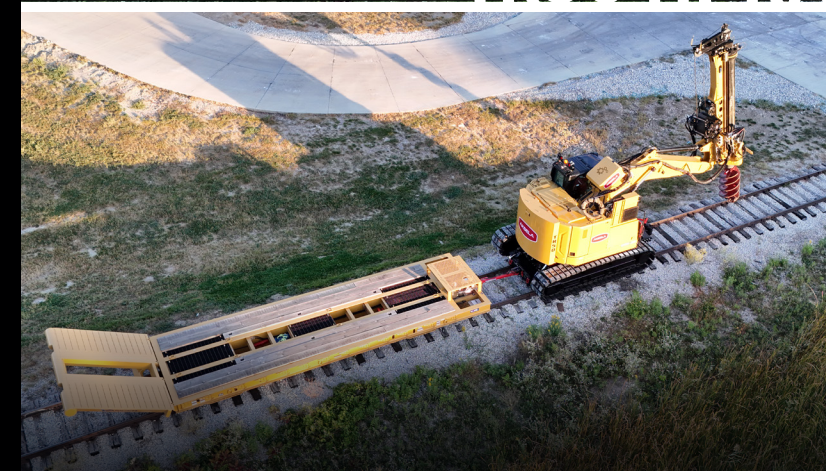
Short & Long-Term Rentals

Used Machine Sales

LET'S CONNECT!
sales@akselafoundation.com
Toll-Free 877-852-0012



TR50 HI-RAIL DRILL RIG

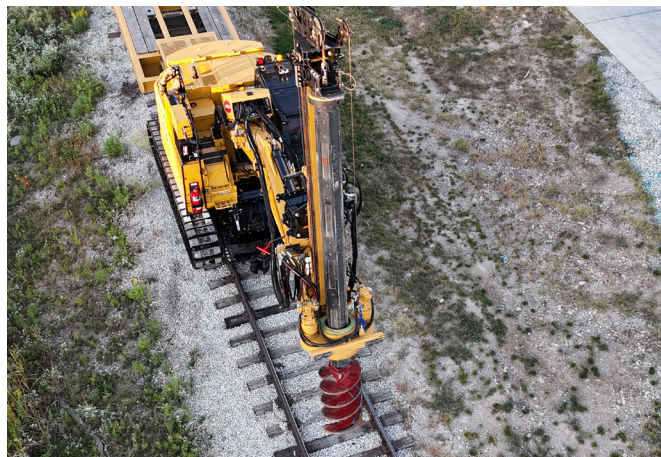


FOUNDATION EQUIPMENT

TECHNICAL SPECIFICATIONS

TR50

- Horsepower 172hp, CAT 325 Platform
- Level/Depth System
- 50,000 ft-lb Running torque gearbox with 0-30/60/100 RPM Drilling speeds & Spin off 140" Total Crowd Mast, 72" Base Mast with 68" Extension
- 25,000 lb BSS Single Layer Kelly Winch
- 8,000lbs service winch
- Crowd collapse block
- Drill Lock
- Rotary slow (single digit variable rpm's)
- 3 Function Control
- Power line Detector
- 48ft Drill Depth 4 Element, Round Locking Kelly Bar 18' Mast height or Square Kelly bar 63'-5" element 17'-10" mast height
- 130MM Stub



HI-RAIL

- 25 MPH Rail Mode
- Capable of Traveling 2% Grade
- Train Air Brakes for towing rail cars B Side, Pintle hitch A side
- Tail swing ""
- 4 Motor Hydrostatic drive
- 4 Hydraulic Brakes- Spring applied, hydraulic release-fail safe
- 20" wheels, Free wheel system for towing
- V-Mac Air compressor package 40CFM, Air dump circuit
- Upper structure swing lock, Weld on Hi Rail frame
- FRA compliant-Disconnect, fire ext, air horns, emergency hydraulics, live track belt, light bar
- Two -insulated wheels for preventing shunting tracks at crossings
- Emergency Stop Button, Semi-Automatic audible back up alarm

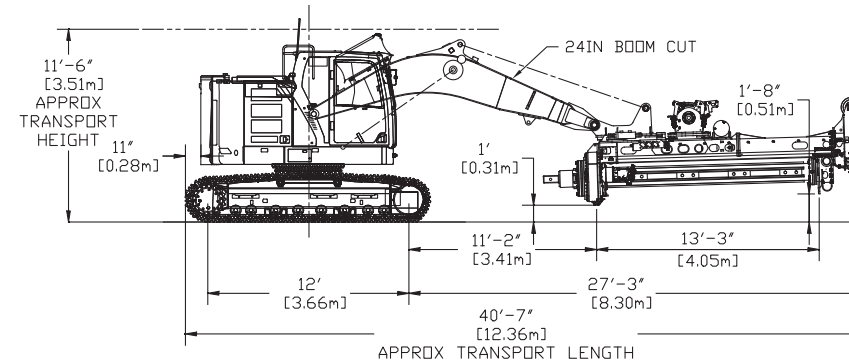
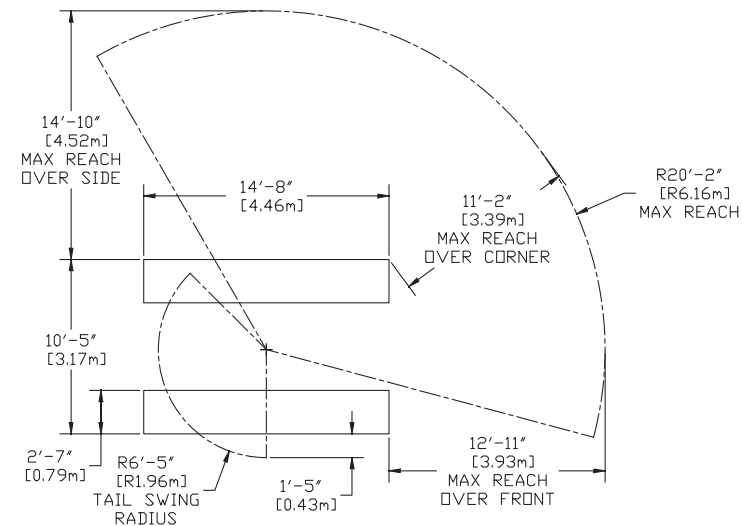
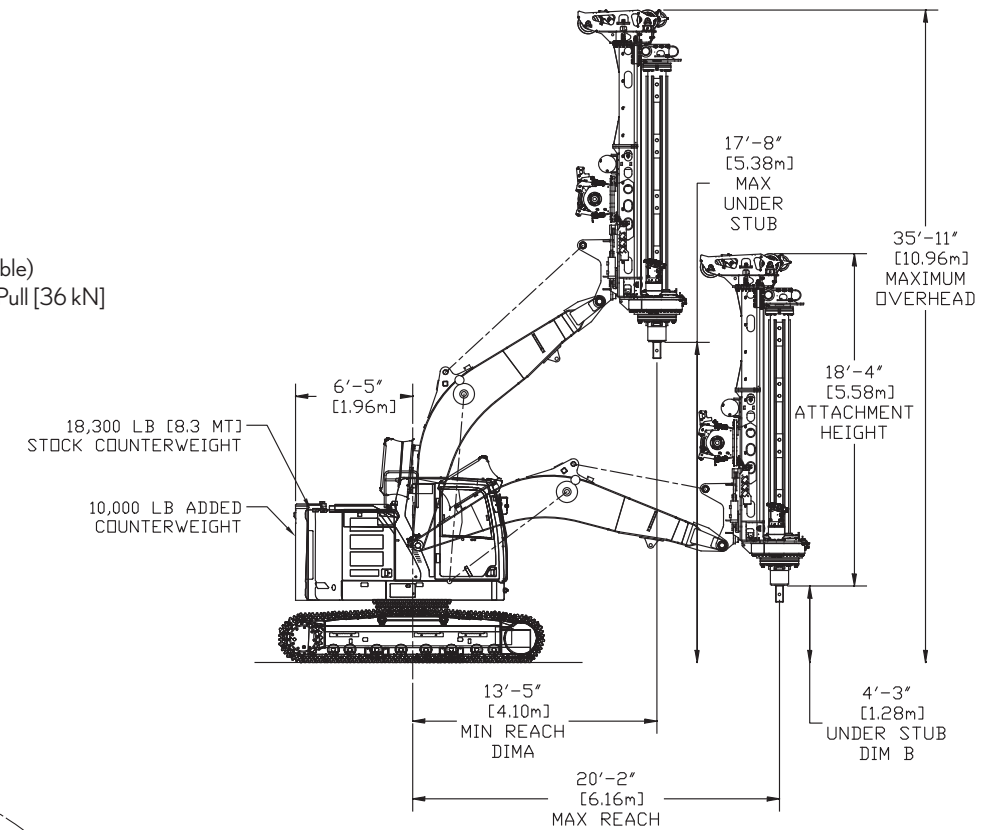


DIMENSIONS

Specifications:

- Torque** - 50,000 ft-lbf [68 kNm]
- Drilling Depth** - 48 ft [14,6 m]
- Base Machine** - CAT 325 EOH
- Drill Speed** - 0 TO 60 RPM
- Spin Off** - 100 RPM
- Crowd Stroke** - 140 IN (3,56 m)
- Crowd Force** - 24,000 LBF (107 kN)
- Kelly Winch** - 18,000 LBF Bare Drum Pull [80 kN] (25,000 LBF Bare Drum Pull [111 kN] Upgrade Available)
- Service Winch** (Optional) - 8,000 LBF Bare Drum Pull [36 kN]
- Side Tilt** - 13 DEG. Left/Right
- Kelly Barset** - 4 Element, Round Locking
- *Attachment Weight** - 9,000 LB [4,080 kg]
- *Bar Set Weight** - 4,500 LBM [2,040 kg]
- *Transport Weight** - 97,280 LBM (44,125 kg)
- *Height** - 11'-3"
- *Width** - 9'-11"
- *Length** - 40'-7"

*All weights are approximate



Radius From Center (FT-IN) [DIM A]	Under Stub Height (FT-IN) [DIM A]
13'-5" [4.10 M]	17'-8" [5.38 M]
16'-0" [4.88 M]	15'-4" [4.66 M]
18'-0" [5.49 M]	12'-6" [3.81 M]
20'-2" [6.16 M]	4'-3" [1.28 M]